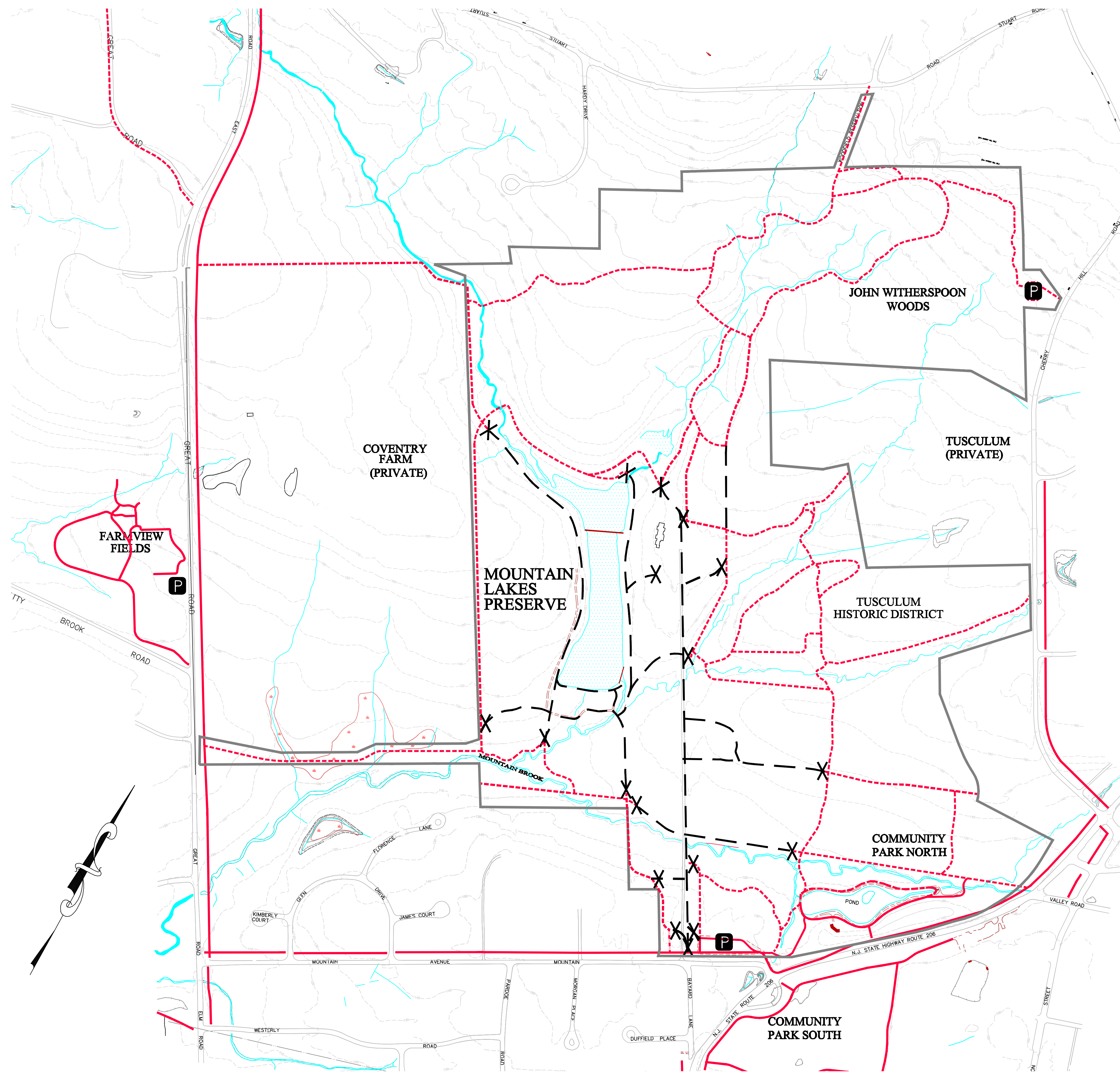


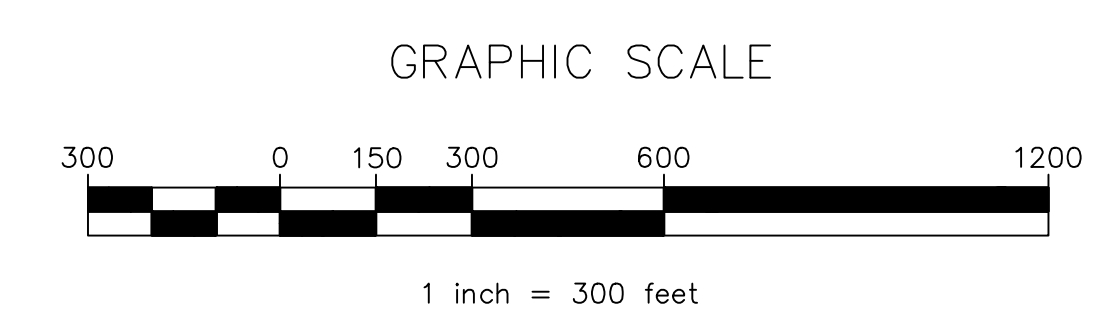
# MOUNTAIN LAKES TRAIL MAP

**\* ON OR ABOUT JULY 1, 2010 SEVERAL TRAILS SURROUNDING MOUNTAIN LAKES WILL BE CLOSED UNTIL FURTHER NOTICE. PLEASE REFER TO THE MAP REGARDING CLOSURES AND THEIR RESPECTIVE DETOURS\***



- Existing Paved Pathways (Handicap Accessible)
- Open Space Boundary (Public Property)
- Trails Closed During Construction
- Existing Unpaved Trails

- P Parking Area
- X Trail Barricade Location During Construction



**\* FOR ADDITIONAL INFORMATION REGARDING THE MOUNTAIN LAKES PROJECT PLEASE VISIT THE TOWNSHIP WEBSITE AT [WWW.PRINCETONTWP.ORG](http://WWW.PRINCETONTWP.ORG) OR CALL THE ENGINEERING DEPARTMENT AT (609) - 921 - 7077\***