



400 Witherspoon Street, Princeton NJ 08540

www.princetontwp.org Fall 2009

Bernard P. Miller, Mayor bmiller@princeton-township.nj.us
James J. Pascale, Administrator jpascale@princeton-township.nj.us

Leaf Bags will be on sale at the Public Works Building on Saturdays, starting October 3, 2009 from 8:00am until 12:00 noon and continuing until October 31, 2009.

Household Chemical Waste Disposal Day
October 10, 2009
8:00am-2:00pm

Mercer County Electronics Collection
November 14, 2009
9:00am-2:00pm

Shade Tree Commission Report

2009 has proven to be a great year for the Princeton Township Shade Tree Commission (PTSTC). We have been able to plant 80 trees throughout the Township, and have improved Laurel Circle and Battle Road Circle by replanting the islands with a variety of trees. In between Carriage Way and Hale Drive, an allee of Japanese Tree Lilacs has been planted. Within a few years these stunning specimens will provide both shade and fragrance to the area.

The Princeton Township Shade Tree Commission has been hard at work in formulating a Tree Mitigation Ordinance that will protect the trees remaining in developmental tracts in Princeton Township.

Joining the PTSTC has been the Environmental Commission and other Township committees. All Princeton Township committees are committed to saving the trees and their canopies that make Princeton an attractive place to live and visit.

In order to facilitate accurate information about the approximately 13,000 trees in Princeton Township, the PTSTC has purchased a program that will provide us with information about our existing trees, helping us to monitor their health and diversity and to recognize hazardous trees. PTSTC works hard to improve and maintain the tree canopy that makes Princeton's tree-lined streets so inspiring to walk along or drive through.



Pet Waste Pollutes Our Waters – What You Can Do To Help Protect Our Water

Did you know that animal waste from pets can pollute our waters? When left on the ground, pet waste is washed by rain and melting snow and ice into storm drains that carry it to our rivers, lakes, the ocean and drinking water.

Animal waste contains a high concentration of nutrients as well as bacteria and disease-causing microorganisms that can cause problems.

Princeton Township pet owners are required to remove all feces deposited by such dog on public or private property and must dispose of same in a sanitary manner in accordance with section 6-5.2 of the Princeton Township Code.

Residents are reminded that all dogs must be accompanied by and under the control of a responsible person and the dog must be on a leash not to exceed 8 feet in length, 24 hours a day unless confined within its owner's property. Dogs in parks shall be restrained by a leash not to exceed 16 feet.





"Reproduced from NFPA's Fire Prevention Week Web site, www.firepreventionweek.org. ©2009 NFPA."

Smoke Alarms In Your Home

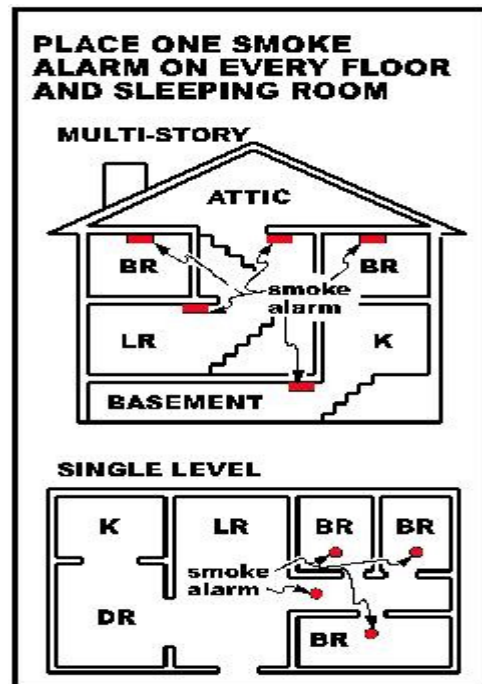
Smoke alarms are the best protection you can have in detecting the presence of smoke in your home while you are sleeping. The following information is recommended by the NFPA regarding home smoke detectors.

- Install smoke alarms in every bedroom, outside each sleeping area and on every level of the home. For the best protection, interconnect all smoke alarms throughout the home. When one sounds, they all sound.
- Test smoke alarms at least once a month using the test button.
- Replace smoke alarms every 10 years.
- Make sure everyone can hear the sound of the smoke alarms.

The Princeton Township Bureau of Fire Prevention is responsible for inspecting smoke alarms in a private residence when it is sold or a change of occupancy occurs when leased or rented. This same service is available upon request at no charge to the occupant if questions arise concerning the operation, placement and or condition of an existing smoke alarm and or smoke alarm system.

Carbon Monoxide Detectors are also very important to have in the home. This gas is undetectable without the proper detector and can be a silent killer. Both Smoke Alarms and Carbon Monoxide Detectors are required in the home per current code requirements. Carbon Monoxide Detectors should be placed within 10' of the sleeping areas in your home.

The illustration below gives the general areas where Smoke Alarms should be installed in the home. To see the minimum code requirement for the placement of Smoke Alarms and Carbon Monoxide Detectors in your home visit the Bureau's website and go to the link for the Smoke Alarm and Carbon Monoxide information sheet.



Visit our website at: www.princetontwp.org/firemain.html or call the Bureau at 609-921-8020 to inquire about additional fire safety information or to request a home fire safety inspection.

Snow and Ice Removal Requirements

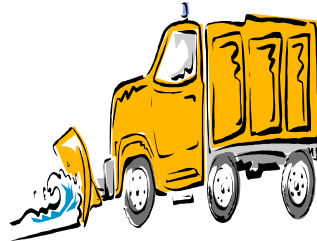
As a reminder to our residents, Section 19-2 of the Township Code states that:

Snow and ice on sidewalks and bicycle paths to be removed or covered by occupant of bordering premises.

The occupant of premises abutting or bordering on sidewalks and bicycle paths along public streets in the township shall re-

move or cause to be removed from the sidewalks and bicycle paths in front of or bordering upon their premises all snow and ice, when practicable, or, in the case of ice which may be so frozen as to make removal impracticable, the occupant shall cause the same to be thoroughly covered with sand or other suitable material, within forty-eight hours after such snow shall have

ceased falling thereon or after such ice shall have formed thereon.



Landscaper & Gardener Registration

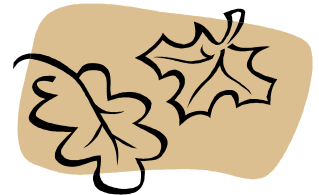
All landscapers & gardeners are required to register to work within the Township. Once registered, they are notified of all collection dates and how to adhere to the regulations. Your landscaper or gardener may call the Public Works Department at 688-2566 for information.

Fall Leaf Collection

Voluntary Bagged Collection Begins in Section I on October 12th and Loose Leaf Collection Begins in Section I on October 19th.

Please visit http://www.princetontwp.org/brush_log.html for a complete schedule of each Section and for all rules and regulations.

Residents are reminded to please have all material out for removal before 7:00am on the Monday of the scheduled week of collection for your section.



9-1-1 Help Us To Help You

In times of an emergency every minute is valuable especially with medical or fire calls. The police have encountered numerous homes, apartments, and businesses around the township that have no address numbers or address numbers poorly placed on the premise. In times of an emergency every minute is critical! The sooner we can find your house, apartment, or business the sooner help is there when you need it most!

Make sure your home or business has a number that is visible and easy to locate. It is a local township ordinance (5-27) to have your house number visible from the street ... "Such number shall be constructed of substantial material and shall be so placed and maintained as to identify the building from the street". A failure to comply with the ordinance can result in a mandatory court appearance, fine or worst yet an injury or death.

New Jersey's Clean Energy Program™ Residential Refrigerator & Freezer Recycling Program FAQs

Q&A:

What are the requirements/conditions?

The refrigerator or freezer must be in working condition and greater than 10 cubic feet in size (up to 30 cu ft). We are seeking units that are a 1995 model or older, however, you are not required to date your fridge to participate in the program. The program is offered to electric customers of the following utilities: Atlantic City Electric, Jersey Central Power & Light, PSE&G and Rockland Electric Co. Customers of New Jersey municipal electric utilities do not qualify for program services and rebates. There is a pickup limit of two appliances (refrigerators and freezers) per account per year. Program participation by is on a first come, first served basis.

How do customers schedule a pickup?

To schedule a pickup for an old refrigerator or freezer, customers need to call the program contractor, JACO Environmental toll free, at 877-270-3520 or by registering on line at [JACO Environmental](#) and they will arrange a pick-up time with you. They will make sure you are an electric customer of one of the following utilities: Atlantic City Electric, Jersey Central Power & Light, PSE&G and Rockland Electric. They will remind you that the unit(s) needs to be empty and operating when their crew comes to collect it and they will need a clear path for unit removal.

Why is New Jersey's Clean Energy Program offering the program?

The program helps customers save money by eliminating older, energy-wasting units. In turn, it reduces New Jersey's overall energy needs thus reducing the need for more power plants and avoiding the environmental impacts of energy generation. In addition, units are recycled in an environmentally responsible manner and are not being returned to the electric grid. The program is part of a collection of programs offered by New Jersey's Clean Energy Program. These solutions will deliver immediate economic benefits to rate payers and reduce the environmental impact of electricity generation.

How much of the refrigerator or freezer is recycled and how does it benefit the environment?

More than 90 percent of each unit is recycled by JACO Environmental following guidelines from the U.S. Environmental Protection Agency. JACO safely disposes of toxins and ozone-destroying chlorofluorocarbon (CFC-11) gases from foam insulation. After capturing toxins (oils, mercury, PCB's) and ozone-depleting substances (CFC 11 and other foam insulation blowing agents and CFC 12 and other refrigerants) the program recycles all the plastic, metals and glass in the fridge, thus limiting landfill waste.

How many units can I recycle?

Limit of 2 appliances (fridge and/or freezer) per customer per address.

Is everyone available to receive this rebate?

The program is offered to electric customers of the following utilities: Atlantic City Electric, Jersey Central Power & Light, PSE&G and Rockland Electric Co. Customers of New Jersey municipal electric utilities do not qualify for program services and rebates.

The information above is provided here for the convenience of our residents. Princeton Township is not responsible for their services or availability.

November 3, 2009 General Election Day Polls will be open from 6am until 8pm



Voter Registration

If you have recently moved to Princeton Township and need to register to vote, mail-in registration forms are available through the Township Clerk's Office (609) 924-5704 or on line from the Mercer County Clerk's Office: <http://nj.gov/counties/mercer/officials/clerk/services/elections.html>

The deadline for registering to vote or changing your address before this year's November 3, 2009 General Election is October 13, 2009.

If you are going to be out of town or unavailable to vote on Election Day, absentee ballot applications are also available at our office or on line from the Mercer County Clerk's Office: <http://nj.gov/counties/mercer/officials/clerk/services/elections.html>

The deadline to apply for an absentee ballot **by mail** for the **General Election** is **October 27, 2009**. You may also apply in person at the Mercer County Clerk's Office up until **November 2, 2009 at 3:00 p.m.** **All applications must be received at the Mercer County Clerk's Office for processing.**
Mercer County Clerk's Office – Election Information
<http://nj.gov/counties/mercer/officials/clerk/services/elections.html>

Revaluation Update Fall 2009

The field inspectors are 2/3 done with the Township residential inspections. The inspectors from Appraisal Systems carry I.D. and will be knocking on your door. For an accurate assessment of your home, please let the inspector in, as the inspection should only take 5 minutes. If you need to make an appointment or have missed the inspector, please call them at 1-800-994-1999. Once all the inspections are complete, Appraisal Systems will begin to review all sales up to October 1, 2009 and place a value on your home based upon the sales data. You will receive an informal letter towards the end of this year with your new assessment. **DO NOT APPLY THE CURRENT 2009 TAX RATE TO THE NEW ASSESSMENT!** The new 2010 tax rate will be out sometime in July of 2010.

Once you receive your new assessment notice, if you feel it is incorrect, you will have an opportunity to review your record card with Appraisal Systems. This review will show how they based your home value against the sold homes. If there are no sold homes in your neighborhood, they look outside your neighborhood. Once this process is complete, the Assessors book will close in January 2010, and budgets will begin. Only for the revaluation year of 2010, if you still feel the assessment is higher than what you could sell it for, the County Appeal process has been extended until May 1, 2010, not the usual April 1.

Recycling Schedule

Princeton Township residents are reminded that recyclables are collected every other MONDAY. Listed below are the remaining recycling dates for 2009.

September 14th	September 28th
October 12th	October 26th
November 9th	November 23rd
December 7th	December 21st

If your recyclables are not picked up on the scheduled day, please call the Mercer County Improvement Authority (MCIA) at 278-8086.

Computer Recycling



Working in conjunction with the Mercer County Improvement Authority, the Township of Princeton continues to offer a computer collection program.

Residents of the Township of Princeton are able to recycle computers and related equipment listed below through the Public Works Department's Office of Recycling. This program is for Township residents only. There is a limit of 2 computer systems per household.

What's Accepted: CPU's, Monitors, Printers, Scanners, Cables, Modems, External Hard Drives, Keyboards, Computer Batteries, etc.

What's NOT Accepted: Faxes, VCR's, DVD Players, Telephones, TV's, Copy Machines, Stereo's.

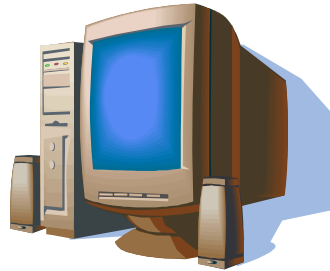
COMPUTER EQUIPMENT FROM TOWNSHIP OF PRINCETON RESIDENTS ONLY! No business equipment is accepted.

How: By Appointment Only, call 688-2566 x 1478 or ask to speak with Janet to arrange a drop off appointment between the hours of 8:45 to 11:45 am and 1:00 to 3:15 pm, Monday thru Friday.

Mercer County Electronic Collection

The Mercer County Improvement Authority has broadened their Household Chemical Waste Disposal Day to include Electronic Collection. Electronic and computer equipment will be accepted at the Sovereign Bank Arena, the event is held in arena parking lot number 1. **Accepted items are:**

PC's, Printers, Fax Machines, Televisions, VCR's, Laptops, Phones, Monitors, Keyboards, Copiers, Electrical Wire, Laptop Peripherals, Camera Equipment, Modems, Mouses, Circuit Boards, Stereo Equipment, Scanners, Networking and Telecommunications Equipment.



This event will be held Saturday, November 14th from 9:00am – 2:00pm rain or shine and is open to all residents of Mercer County, no commercial or business equipment is accepted.

Proof of residency is required.

Call 609 278-8086 for more information.

Recycling Buckets

Recycling Buckets are available at the Public Works Garage located at the intersection of Valley Road and Witherspoon Street.

The hours of the garage are:

8:00 a.m. to 3:30 p.m.

Please provide proof of residency, i.e. drivers license, tax bill, utility bill. Buckets are available to Princeton Township Residents only.

Buckets are **FREE**.

Lids have been discontinued and are no longer available.

Household Chemical Waste

Disposal Day

Sponsored by the
Mercer County Improvement Authority

Where: John T. Dempster Fire School
Bakers Basin/Lawrence Station Road,
Lawrence Township

When: October 10th

Time: 8:00 am to 2:00 pm Rain or Shine!

What to Bring: Computer's, TV's, VCR's,

Aerosol Cans, Photographic Chemicals, Used Motor Oil, Lighter Fluid, Propane Gas Tanks, Pesticides/Herbicides, Pool Chemicals, Florescent Bulbs, Car Batteries, Used Oil Filters, Paint Thinner, Oil Based Paint, Stains/Varnishes, Anti-Freeze, Driveway Sealer, Gasoline, Gasoline/Oil Mix, Insect Repellants.

What NOT to Bring: Latex Paint, Silvex, Unknowns, Infectious Waste, Radioactive Materials, Explosives & Munitions, Agent Orange 2,5,5-T or Dioxin.

(Latex paint is non-hazardous. It may be properly disposed of in household trash if dried out completely)

MERCER COUNTY RESIDENTS ONLY

Proof of Mercer County Residency Required.

Residential waste only, no waste from Commercial or Industrial Sources.

PLEASE CALL THE MERCER COUNTY IMPROVEMENT AUTHORITY at 278-8086 with questions.

Joseph Maher Ecological Facility

If you have yard debris that you need to dispose of after the scheduled pick-up it can be taken by either yourself or a registered landscaper to the Joseph Maher Joint Ecological Facility located at 3701 Princeton Pike, just past the intersection of Provinceline Road. The facility is open Monday – Friday year round. Beginning April 4th the facility will be open on Saturdays through the first week in December. The hours are 7:30-2:30. Proof of residency (i.e. driver's license or tax bill) is required to access the facility.

Mulch is also available at the facility and is free to Township residents with proof of residency. If you would like your mulch loaded for you there is a fee of \$9.00 per cubic yard, however this service is not available on Saturdays.

MercerMax

Mercer County Improvement Authority's recycling division has a new program called MercerMax. This program enables residents and businesses of Mercer County to make online trades or inquiries for goods or services they may be looking for or want to get rid of. The Mercer County site is www.mercermax.org. Can't bear to throw out that perfectly good exercise bike? Kids outgrow their backyard toys? Need some filing cabinets for your office? Check out the website, register and post your items for sale or a description of what you are looking for. The items are free and so is the service. Help promote recycling, buy recycled items and recycle yours!

Grass Clippings

Grass clippings provide beneficial nutrients to gardens and lawns reducing the need for fertilizers and contributing to the soils organic matter. It is recommended to mow your grass with a mulching mower, when done properly, you are left with neat, "just vacuumed" appearance. And thatch is not a problem incurred with mulching mowers, a common misconception. Thatch is the result of excess surface roots caused by over watering and over fertilizing. If you do not own a mulching mower, simply use the clippings as a garden mulch, spreading it on the surface to help eliminate weed growth, reduce soil spattering and crusting and also to help moderate the soil temperature.

Solutions to Stormwater Pollution

Easy Things You Can Do Every Day To Protect Our Water

A Guide to Healthy Habits for Cleaner Water

Pollution on streets, parking lots and lawns is washed by rain into storm drains, then directly to our drinking water supplies and the ocean and lakes our children play in. Fertilizer, oil, pesticides, detergents, pet waste, grass clippings: You name it and it ends up in our water.

Stormwater pollution is one of New Jersey's greatest threats to clean and plentiful water, and that's why we're all doing something about it.

By sharing the responsibility and making small, easy changes in our daily lives, we can keep common pollutants out of stormwater. It all adds up to cleaner water, and it saves the high cost of cleaning up once it's dirty.

As part of New Jersey's initiative to keep our water clean and plentiful and to meet federal requirements, many municipalities and other public agencies including colleges and military bases must adopt ordinances or other rules prohibiting various activities that contribute to stormwater pollution. Breaking these rules can result in fines or other penalties.



As a resident, business, or other member of the New Jersey community, it is important to know these easy things you can do every day to protect our water.

Limit your use of fertilizers and pesticides

- Do a soil test to see if you need a fertilizer.
- Do not apply fertilizers if heavy rain is predicted.
- Look into alternatives for pesticides.
- Maintain a small lawn and keep the rest of your property or yard in a natural state with trees and other native vegetation that requires little or no fertilizer.
- If you use fertilizers and pesticides, follow the instructions on the label on how to correctly apply it.



Make sure you properly store or discard any unused portions.

Properly use and dispose of hazardous products

- Hazardous products include some household or commercial cleaning products, lawn and garden care products, motor oil, antifreeze, and paints.
- Do not pour any hazardous products down a storm drain because storm drains are usually connected to local waterbodies and the water is not treated.

- If you have hazardous products in your home or workplace, make sure you store or dispose of them properly. Read the label for guidance.

- Use natural or less toxic alternatives when possible.

- Recycle used motor oil.

- Contact your municipality, county or facility management office for the locations of hazardous-waste disposal facilities.



Keep pollution out of storm drains

- Municipalities and many other public agencies are required to mark certain storm drain inlets with messages reminding people that storm drains are connected to local waterbodies.

- Do not let sewage or other wastes flow into a stormwater system.

Clean up after your pet

- Many municipalities and public agencies must enact and enforce local pet-waste rules.

- An example is requiring pet owners or their keepers to pick up and properly dispose of pet waste dropped on public or other people's property.

- Make sure you know your town's or agency's requirements and comply with them. It's the law. And remember to:

- Use newspaper, bags or pooper-scoopers to pick up wastes.

- Dispose of the wrapped pet waste in the trash or unwrapped in a toilet.

- Never discard pet waste in a storm drain.

Don't feed wildlife

- Do not feed wildlife, such as ducks and geese, in public areas.

- Many municipalities and other public agencies must enact and enforce a rule that prohibits wildlife feeding in these areas.



Dispose of yard waste properly

- Keep leaves and grass out of storm drains.

- If your municipality or agency has yard waste collection rules, follow them.

- Use leaves and grass clippings as a resource for compost.

- Use a mulching mower that recycles grass clippings into the lawn.

Don't litter

- Place litter in trash receptacles.

- Recycle. Recycle. Recycle.

- Participate in community cleanups.



Contact information

For more information on stormwater related topics, visit www.njstormwater.org or www.nonpointsource.org

Additional information is also available at U. S. Environmental Protection Agency Web sites www.epa.gov/npdes/stormwater or www.epa.gov/nps

New Jersey Department of Environmental Protection
Division of Water Quality
Bureau of Nonpoint Pollution Control
Municipal Stormwater Regulation Program
(609) 633-7021

